

From the new railway station, through Les Marécottes village to the renovated cable car station

IN BRIEF

An underground lift to benefit everyone

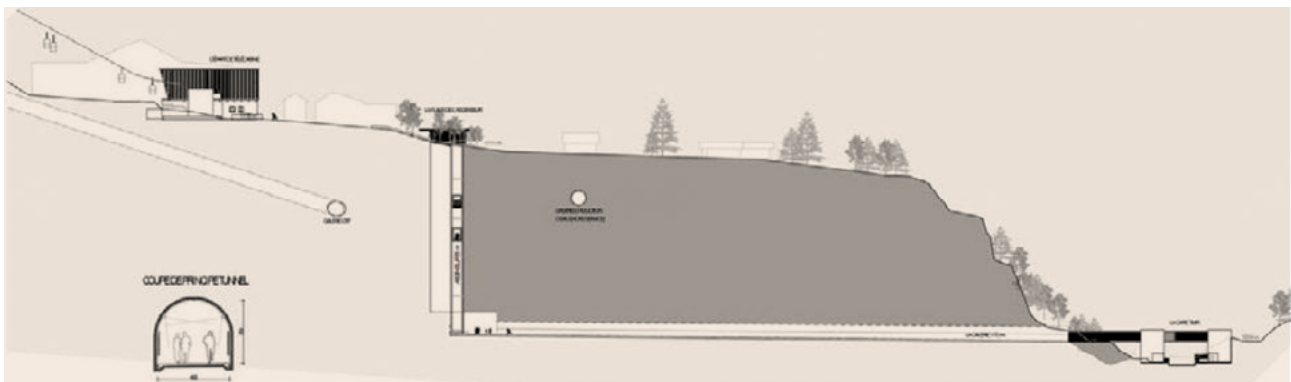
Today, Les Marécottes station is an 800 metre walk from the cable car station. The altitude difference is 80 metres. It's an arduous and off-putting climb of about 20 minutes. Passengers (skiers, hikers, families, residents, second-home owners, etc.) are disinclined to use public transport to visit the valley.

Two stakeholders have already taken steps to remedy this situation. The **TMR** transport company (**Transport de Martigny et Régions**) is planning to move Les Marécottes railway station, to renovate it completely and to improve safety standards. Trains will also run more frequently. TMR SA, which operates the cross-border Mont-Blanc Express, is entirely convinced of Trient Valley's potential. Planning permission is planned for 2024, with work beginning at the end of 2026.



For its part, **TéléMarécottes SA**, which operates the ski area, intends to renovate the cable car station in the valley as well as the cable cars and pylons. The ski area is a linchpin of the entire valley with its plentiful natural snowfall and rising visitor numbers, in particular since it became a Magic Pass destination.

A project has now been developed for an **electric underground lift**, financed by TéléMarécottes. This transport link, costed at around **CHF 8.5 million**, would help reduce traffic in the whole valley while increasing the appeal of combination tickets (train + ski, train + zoo + ski lifts, etc.).



DESCRIPTION

A decisive contribution towards an eco-friendly future

- Railway station - village connection, increase in population's quality of life (place of residence and work)
- Railway station - cable car connection, promote development of the valley: TéléMarécottes is the valley's nerve centre in winter
- Strengthening the railway and cable car as drivers of tourism in the Trient Valley.
- Revitalising the village centre by reducing traffic
- Reducing CO₂ emissions in the valley
- Contributing to the construction of a first-class, sustainable tourist destination
- Contributing to a change in habits and encouraging visitors to adopt eco-friendly behaviour



WHY SHOULD YOU SUPPORT THIS PROJECT?

An important step towards the inspiring model of Zermatt

The ambition to encourage **non-motorised mobility** and to reduce the number of cars in our valley is not just wishful thinking.

The **Commune of Salvan** has been pursuing this goal for many years. Its plans include a car park at the bottom of the valley from where both visitors and residents would have easy access to the valley, including those who have chosen to go completely without a car. Zermatt is an inspiring example in this regard. Currently, **90% of Trient valley's visitors are Swiss** and 60% of them come from the canton of Valais (summer/winter average).

This target group is therefore prepared to take the train to make use of the different leisure activities such as skiing, sledging, scooter riding or summer hiking.

Furthermore, figures show that 70 to 80% of visitors are day-trippers rather than longer-stay visitors. This also speaks in favour of public transport.

This lift would help reduce traffic in the valley while increasing the appeal of combination tickets (train + ski, train + zoo + ski lifts, etc.).



Contact

Florian Piasenta
President of Salvan
T. 079 449 51 20
florian.piasenta@salvan.ch